

Patience
Modesty
GratITUDE
Humility
Sincerity



PRESTON MUSLIM GIRLS
— HIGH SCHOOL —

Education with Patience Modesty Gratitude Humility Sincerity

PROSPECTUS

Ofsted
Outstanding
School

2016/2017



SCHOOL AIMS

Preston Muslim Girls High School aims to provide an excellent educational experience that will develop each and every pupil to achieve her full spiritual, moral, social and educational potential through a deep appreciation of her faith



OFSTED



This school is very much at the heart of its community, and governors and senior leaders work together very effectively to move the school forward



OFSTED



Students attend regularly, have an exemplary attitude to their learning and thoroughly enjoy school



OFSTED

Headteacher's Welcome

Our Vision and Values

Welcome to Preston Muslim Girls High School (PMGHS). We are a popular and highly regarded Islamic school for girls. We aspire to provide excellence at the heart of [everything](#) we do and are driven by our desire to create the leaders of the future.

PMGHS is more than a school: it is a community, an experience and a way of life that 'nurtures excellence' in every respect. Our commitment to consider and cultivate the ['whole'](#) pupil begins from the moment she joins us; we welcome her into a friendly and compassionate environment where her individual strengths, talents and interests are nurtured. We provide diverse, innovative and challenging opportunities across every facet of education, including a rich curriculum and an array of values.

The staff at PMGHS are a team of inspirational and dedicated educators, all of whom work hard to provide a community of excellence every day and bring energy, passion and innovation, both in and out of the classroom. We are all committed to embody and encourage in our pupils the overarching values of [Patience](#), [Modesty](#), [Gratitude](#), [Humility](#) and [Sincerity](#); these qualities and values are a distinctive part of our faith. It is a combination of these qualities and values that help us to empower our pupils to enter the next stage of their lives as spiritual, ambitious, confident and happy members of the community. This is our [vision](#) for our PMGHS community.

Our pupils exceed academic expectations and are a testament to our [vision](#) and our [values](#). We achieve this by consistently tracking, assessing, supporting and challenging each pupil, encouraging them to surpass their own expectations. When you meet one of our pupils you will encounter someone who shares our vision and exemplifies the qualities and values which we promote. It is their self-belief and our shared vision that will allow our pupils to thrive in the modern world, and become the leaders of the future.

I hope this prospectus provides a glimpse into what makes PMGHS a special place. We also invite you to visit our PMGHS community to experience our drive for excellence in person.

Mr R Patel
Headteacher

Ethos

PMGHS was established in 1989 by a group of local volunteers. Their ambition was to provide an outstanding educational experience with a strong Islamic character that would develop each and every pupil to achieve her full spiritual, moral, social and educational potential. A deep appreciation of our faith is at the heart of everything we do.

At PMGHS we combine traditional values with forward-looking and vibrant learning so that our young people are nurtured to become considerate, confident and well-

rounded Muslimahs. We have created an atmosphere where expectations are high, ambitions are great and values are deeply rooted; where pupils grow in confidence and are able to pursue their dreams. Pupils and staff are expected to work hard, to take pride in what they do and to be directed by their inner moral compass. Values of Patience, Modesty, Gratitude, Humility and Sincerity are constantly encouraged. Our school provides a warm and welcoming environment where every pupil feels truly part of our inclusive family.



We Value... Spirituality

Spirituality is deeply embedded in every area of the school. Although the school has grown considerably, our mission and values have remained unchanged since it was founded and continue to be based on the Sunnah of the Prophet (PBUH) and teachings of the Qur'an. In a modern and multi-cultural world, it is essential that pupils respect and understand those of different faiths and cultures. We have taken lessons of respect and tolerance from our faith and embedded them in our curriculum, Form Time discussions, Halaqah topics, assemblies and all of the community and fundraising work that we do.

A great emphasis is placed on character development – promoting values such as respect, self-discipline, care, tolerance, patience, modesty, gratitude, humility sincerity and love for each other. We promote an ethical lifestyle, enabling our learners to feel empowered to fulfil their responsibilities to themselves, their families, wider humanity and the environment around them.

We promote Fundamental British Values to prepare our pupils to live in a multi-faith modern Britain. We want to prepare all our students to achieve to their potential, fully engaged citizens in multi-cultural 21st century Britain. We want to support and help them explore how they can apply faith values in their everyday lives as committed British citizens. We nurture young Muslimahs who embody the teachings of our religion whilst showing consideration for the beliefs of others.



“
Spirituality has been intertwined into
our education and supports us in our
journey as young Muslimahs

”
Maariyah Secretary

Faith and Character Education

Character

- Facilities to pray Salaah are available throughout the day. This includes bespoke facilities for ablution for both pupils and staff.
- During October to March, a timetable is created to promote the praying of Zuhr Salaah including supervised preparation time (ablution). During December and January, a timetable is created to promote praying of Asr Salaah including supervised preparation time (ablution).
- During winter months, a fasting programme is established practice on Mondays and Thursdays.
- Lessons start and end with a prayer. Visual stimuli are also on display in all classrooms.
- Prayer spaces in the school have identified the direction of the Qibla.
- Islamic greetings are exchanged in school.
- The recitation of Surah Kahaf takes place for Friday.
- Pupils set themselves weekly 'Spiritual', 'Personal' and 'Academic' goals. They record and monitor their own progression.
- The importance of Sunnah foods is taught.
- External speakers (vetted) deliver special assemblies on faith and character.
- The pastoral offer includes bereavement support through pupil/staff mentoring and bespoke counselling.
- The school has appropriate arrangements for changing and showering.
- Pupils and staff are allowed to wear articles of clothing important to their faith beliefs, as part of the uniform (providing there are no health and safety concerns).

Creativity

- The school delivers a vibrant talent programme (e.g. PMGHS Talent Day).
- Outdoor education includes Faith and Character Education trips (faith trails, messy maps, DofE, green spaces).
- There are opportunities to participate in Sunnah sports/games.
- The diversity of the school community is celebrated via National and Global Days such as Black History month, or Holocaust Memorial Day.
- There are opportunities throughout the week for meditation, silent reflection, tasbeeh and Qur'an recitation.
- The school library has a varied selection of resources that support pupils in their faith and character development.
- Pupils contribute to and participate in Assembly design and delivery.
- Islamic art is installed across the school site.



Community

Whole school Faith and Character Education learning and events include:

- Muharram - Islamic New Year/Day of Ashura
- First 12 Days of Rabiul Awwal - (inspired by Muhammad PBUH Campaign)
- Shab-e-Me'raj (the night of ascent) event
- Shab-e-Baraat (15 Sha'ban)
- Daily Ramadhan Challenges (prayers, study circles)
- Eid ul Fitr (following Ramadhan)
- Eid ul Adha (Feast of Sacrifice)
- Five Days of Hajj
- Half-termly Charity Fundraising, Volunteering and Social Action projects delivered (e.g. Orphans Sponsorship programme, Ramadan fundraising).
- Age appropriate Prevent awareness raising strategies and activities are developed for pupils.
- Halal food is served on school premises.

Curriculum

- There are regular opportunities to celebrate the faith achievements of young people.
- Strong partnerships are established with local mosques and Islamic schools.
- Islam is taught alongside other major world faiths and beliefs in Religious Studies lessons in all year groups.
- The school has devised a 'PRSHE' curriculum implemented in KS3 – KS4 including Human Rights, Healthy Lifestyle, E-Safety, CSE awareness and Moral Responsibility.
- Sex and Relationships Education taught sensitively in line with the RSE Policy and based on the materials provided by the Association of Muslim Schools.

- Faith Learning programme is embedded (e.g. a regular cycle of prayer and ablution workshops take place throughout the year and many enrichment Spirituality days per year, rites of passage and Weekly Halaqah/ Circles).
- The Hadeeth and Sunnah of the week is delivered in morning registration/assemblies and also shared with staff, parents and pupils via weekly newsletters called Jawahir-Ut-Taqwa (Jewels of Piety).



We Value... Success

PMGHS is an outstanding school! Don't take our word for it, just look at what the Department of Education say about us. Since 2019 the school has been in the Top 10 of all schools in the country for pupil progress. By choosing our school you know that you are choosing the best. We have very high expectations of our teachers and our pupils and we set all pupils challenging targets to stretch them. We develop the self-confidence of pupils by providing an outstanding level of support and as a result, our girls routinely achieve far more than they ever thought they were capable of.

We are always delighted to welcome back former pupils who now serve the community as doctors, dentists, lawyers, accountants and in a variety of other professions.



“
Your school is one of the top 100 non-selective state-funded schools in England based on the percentage of pupils achieving the English Baccalaureate, Key Stage 2 to Key Stage 4 value added progress and your achievement in the GCSE exams
”

Nick Gibbs, Schools Minister



“
PMGHS has pushed me to be the confident person that I am today
”

Aaminah Ahmed



High Standards, Homework and Rewards

Every pupil can expect to receive one piece of homework for each subject every fortnight. The homework tasks that are assigned can vary with pupils being set: written tasks, revision, reading, planning and research. The amount of time required for each piece of homework increases as the pupils' progress through the school.

Homework timetables and guidance is given at the beginning of each year. Pupils and parents can access homework through our SIMS portal. Teachers will set homework and upload resources to help and guide pupils in their learning.

We encourage and support pupils to work hard to achieve their utmost potential. We strive to help them achieve their goals and ambitions. Pupils who demonstrate this drive and

commitment to achieve are acknowledged and celebrated on a regular basis at our school.

As the hadeeth states to the nearest effect, 'every person will be rewarded according to what they intended', we believe that hard work, positive behaviour, outstanding attendance and excellent contribution to school life will be rewarded, therefore pupil success is celebrated on a regular basis.

The Al It'qaan (Excellence) Awards are awarded termly in our Celebration Assembly to pupils who have demonstrated outstanding behaviour. Prizes range from certificates, trophies, vouchers and trips. Pupil achievements are further celebrated at special events such as the Awards ceremony.

Promoting Good Behaviour

We have extremely high expectations of all our pupils, parents and staff. High academic achievement, strong morals and smart personal appearance is a norm at the school. Pupils respond positively to this by showing respect and politeness to staff, and care and consideration to each other and pupils can gain rewards for good behaviour as well as good work. Visitors and organisations that have

worked with us have commended our pupils as being great ambassadors for the school. Values such as patience, modesty, gratitude, humility and sincerity are constantly promoted. With care, compassion and politeness our school assures a warm and welcoming learning environment where every pupil feels truly part of our inclusive family.



We Value... Learning

It is through outstanding teaching that our pupils make exceptional progress. We are blessed with teachers who are passionate, committed and most importantly specialists in their respective subject. They inspire all of our pupils to make the most out of their learning. As the school continues to grow, one thing that remains consistent is the excellent quality of teaching.

At PMGHS we have created an environment where the inquisitive minds of our pupils are not only fed with the fruits of knowledge but are also provided with the skills to learn on their own. Achievement, curiosity and confidence are actively encouraged in all lessons. We create independent thinkers who are not afraid to express their opinions, but at the same time, learn to respect the views of others.

“ Teachers have high expectations of what students can achieve. They plan interesting lessons that help students to learn effectively and make good progress

”
OFSTED



“ Our teachers are the best role models to look up to

”
Sadia Ahmed



Curriculum

We provide a broad and balanced curriculum that fully meets and extends the national curriculum. On arrival all pupils are placed in form groups with dedicated and specialist form tutors. Each form group is supported by a Link Prefect and elects its own representatives to the Pupil Council and Shura Council.

Some Year 7 classes are taught in form groups with others being taught in classes based upon performance in Key Stage 2 assessments, baseline testing and departmental analysis of classwork. Pupils select options at the end of Year 9 in order to refine the subjects they study to GCSE. New subjects such as Business Studies and Health and Social Care become available at this time.

Key Stage 3

In Years 7, 8 and 9 pupils will study:

- English
- Mathematics
- Science
- Arabic
- Art and Design
- Computing
- Drama
- French
- Geography
- History
- Food Preparation and Nutrition
- Nasheeds
- Physical Education
- PRSHE
- Religious Education
- Urdu
- Design Technology under Urdu

Key Stage 4, Years 10 & 11

Pupils begin their GCSE course of study in Year 10 allowing for a three year programme of study, providing a greater depth of learning. All pupils follow public examination courses usually leading to GCSE or GCSE equivalent qualifications. The curriculum is evaluated regularly and additional qualifications may be offered if suitable.

All pupils will study a sufficient breadth of subjects in order to qualify for the English Baccalaureate (Ebacc). To be eligible for the English Baccalaureate pupils will study English Language, Mathematics, two Sciences, a Language and a Humanities subject.

In Key Stage 4 pupils will study:

- English (Language and Literature)
- Mathematics
- Sciences, including separate GCSE Sciences in Biology, Chemistry, Physics
- Arabic
- Art and Design
- Business Studies
- Computer Science
- Textiles
- Design Technology
- Food Preparation and Nutrition
- French
- Geography
- Health and Social Care
- History
- Sports Studies
- PRSHE (non-GCSE)
- Religious Studies
- Urdu

Extra-Curricular

Specialist help is provided by our Learning Support Department and there is an array of homework clubs, booster sessions and other interventions. For GCSE pupils these can also run during holidays and at weekends as we seek to support our pupils to achieve more than they ever thought they could.

Five times a year we suspend the normal timetable for a day and pupils follow a theme-based Enrichment Day intended to broaden their understanding and to work outside the boundaries of conventional subjects. These involve visits from external speakers and are creative in their approach and outcomes. In addition to this the school has a range of clubs that pupils can attend.



We Value... Enriching Experiences

Our pupils study a wide range of subjects and they all follow a broad curriculum which includes separate sciences at GCSE, three languages starting in Year 7 and a creative curriculum that works in tandem with our academic curriculum. We value the outstanding quality of what our girls experience both in and outside the classroom. Each term we organise themed Enrichment Days that address a range of topics such as the Olympic Games, Business and Enterprise, Tomorrow's Engineers and Future Medics. Pupils benefit by working alongside visiting speakers with an array of experience such as Members of Parliament, charity officials and successful professionals. We also offer a wide range of extra-curricular activities including a thriving Duke of Edinburgh's Award programme that sees our girls camping and hiking across the North West, developing their teamwork and leadership skills.

The DofE award helps personal attributes that enables our pupils to interact effectively and harmoniously with others. The award attributes towards developing positive attitude that can influence how successful they are in their personal and working lives.

Each section of the bronze Duke of Edinburgh's Award that we offer nurtures a different combination of physical and personal development skills, such as:

- Decision-making, leadership, communication and problem-solving
- Resilience, positivity, self-motivation and increasing self-confidence
- Physical health and well-being, skills development and coordination
- Volunteering in the Community



“
The memories I made at PMGHS
will stay with me forever

”
Leylah Hafeji



We Value... **Every Pupil**

Happiness and well-being go hand in hand at PMGHS. Our core Islamic values create a caring and supportive environment which is evident in every facet of the school.

Every pupil, regardless of ability, will have their needs met at PMGHS. Our curriculum is designed to challenge and stretch the minds of all pupils. Support for pupils with particular needs is provided, both in and out of the classroom, allowing all pupils the opportunity to reach their full potential. In short, at PMGHS we nurture the potential of all pupils at all levels from all backgrounds, regardless of their needs.

Pupils play a vital role in decision-making at the school. Through our Student Council and Student Shura (spirituality group), pupils are involved in shaping the future of their school on a diverse range of issues, such as food choices in the canteen, the development of the new prayer facilities and the introduction of the new school uniform. Every girl that attends PMGHS will receive all the support that she needs academically, emotionally, spiritually and socially. PMGHS is a family and we believe that by the time our girls are ready to leave, we will have helped them flourish into strong Muslimahs.

“
Students attend regularly, have an exemplary
attitude to their learning and
thoroughly enjoy school
”

OFSTED

“
I am indebted to PMGHS for all the support
and guidance they have given me
”

Amaara Latif



We Value... **Inclusion**

We have an inclusive environment, where there are high expectations for every pupil. The school uses SEN Code of Practice (2015) to reduce barriers to learning and participation. The staff and the governors work together to create a welcoming environment for all.

Our teachers and teaching assistants are highly trained at delivering a differentiated curriculum to meet individual needs. The students have positive and appropriate support in the classrooms to help reach their potential.

We set and monitor targets that challenge the ability of all pupils. Progress and achievement, for pupils receiving support, is significantly higher than the national average. Furthermore, these pupils routinely go on to study at college and university.



Student and Shura Council

We believe in developing pupils' self-esteem and confidence. Through the Student and Shura Councils pupils are encouraged to voice their opinions and play an active role in their school community. Each form group elects its own representatives for both councils which meet regularly. These groups, and the Prefect group, are important in shaping the character of the school and in developing pupil leadership skills.

“
PMGHS has a caring environment which
inspires me to be the best I can
”
Humairah Musa



We Value... Community

Preston Muslim Girls High School was established by the community and it still sits at the heart of the community. We are a local school delivering outstanding performance in an Islamic setting. Pupils engage in projects with care homes, children's hospices and many local charities. The people who attend the school and those who work in it are at the centre of everything that we do.

As a school, we have a duty to understand our responsibilities as part of a bigger picture. Every pupil takes part in the Orphan Sponsorship Programme which instils within them qualities of compassion, care and gratitude. Through charity collections, weekly discussions of current affairs and the mirroring of national events such as Holocaust Memorial Day and National Science Week we ensure that all of our pupils develop the understanding of their roles as British citizens. We also raise their sights and recognise that we are all members of one ummah, sharing one planet that we must all care for. Ultimately, we are a local school whose pupils understand the vital role we all play in a wider world.



“
PMGHS has a caring environment which
inspires me to be the best I can
”
Humairah Musa



We Value... Our Image

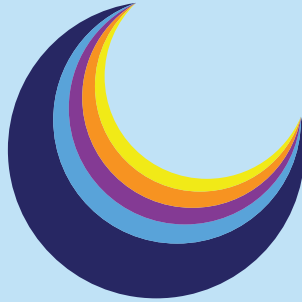
The crescent reminds us of our shared past as Muslims. It is the defining symbol used by Muslim leaders and rulers throughout history and can be seen on domes, flags and printed on coins.

Notice how the logo consists of five different colours and it is made of five crescents of different sizes. This variety in size and colour represents the diversity of our school. Our learners are like a wonderful array of colours: all different, from different backgrounds and with differing abilities. They fit together to make a single shape. The remarkable way that these different strands complement each other is what makes PMGHS such a beautiful place to attend.

The different sizes of the crescents show how our learners develop academically, spiritually, physically, emotionally and socially over the five years they are at PMGHS, growing in knowledge and understanding as they progress.

Finally, there are five colours to represent the five year groups in the school; the five pillars of Islam and the five core values that the school stands for: Patience, Modesty, Gratitude, Humility and Sincerity.

“They ask you (O Muhammad S.A.W.) about the crescents. Say, ‘These are signs to mark fixed periods of time for mankind...’ so that they mark their acts of worship and the time of their Hajj.” (2:189)



Our logo symbolises the core values of Islam which are the bedrock of the school.



“ Our school has taught me to become charitable, compassionate and generous ”
Khadijah Issa

Uniform

Uniform	Permitted
School Blazer	PMGHS school blazer to be worn at all times. No other blazers are allowed.
White Blouse	Blouse has to be worn over a white vest top at all times.
Black School Skirt	Skirt with school logo has to be ankle length and of a modest fit. It must be worn with black leggings. Skirts should not be altered or made too tight on the body.
Black Head Scarf	Scarf with school logo.
Coats/Jackets	A plain black outdoor coat/jacket is allowed. Denim or leather jackets or those with slogans and logos are not allowed.
Socks	Plain black socks must be worn with no patterns or decorations. No ankle socks.
Shoes	Plain black, flat sensible shoes or ankle boots in adverse weather conditions. Pupils must not wear high heels, trainers, high boots or sandals.
Jewellery/Accessories	One watch is acceptable and stud earrings only. No other jewellery, badges or pins are allowed. No smart watches
PE Kit	Permitted
Black and Teal Top	With the school logo.
Black Tracksuit Trousers	With the school logo.
Socks	Plain black or white sports socks are allowed.
Footwear	Suitable sports trainers must be worn.



The School Day

Monday - Thursday	
8:25am	Pupils should be in form rooms
8:30am - 8:50am	*Registration/ Assembly
8:50am - 9:40am	PERIOD 1
9:40am - 10:30am	PERIOD 2
10:30am - 10:50am	Morning Break
10:50am - 11:40pm	PERIOD 3
11:40am - 12:30pm	PERIOD 4
12:30pm - 1:30pm	Lunch
1:30pm - 2:20pm	PERIOD 5
2:20pm - 3:10pm	PERIOD 6
Friday	
8:30am - 8:45am	*Registration
8:45am - 9:35am	PERIOD 1
9:35am - 10:25am	PERIOD 2
10:25am - 10:45am	Break
10:45am - 11:30am	PERIOD 3
11:30am - 12:15pm	PERIOD 4
12:15pm finish	



PRESTON MUSLIM GIRLS
— HIGH SCHOOL —

Education with Patience Modesty Gratitude Humility Sincerity

01772 651906 | www.pmghs.com | info@pmghs.com

The Crescent, Deepdale Mill Street, Deepdale, Preston, PR1 5BY

P
M
G
H
S

